

# TLM. | Adjustable hook clamp

Steel or stainless steel

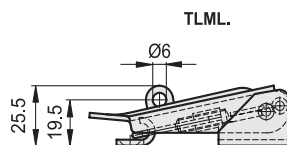
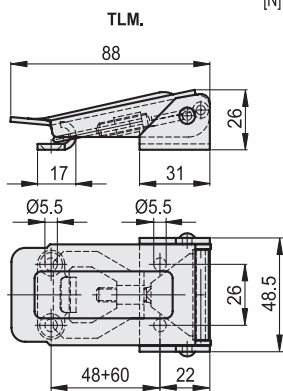


## STANDARD EXECUTIONS

- **TLM.**: basic hook clamp.
- **TLML**: hook clamp with padlock hole.

Indexes for materials and treatments to add to the above-mentioned standard executions:

- **Z**: zinc-plated steel.
- **SST**: AISI 304 stainless steel.



## TLM.Z - TLML.Z

**METRIC**

Code	Description	Max. working load [N]	Load at breakage [N]	⚖️
420151	TLM.Z-26/48-60+R	1500	3000	175
420153	TLML.Z-26/48-60+R	1500	3000	175

## TLM.SST

**INOX STAINLESS STEEL METRIC**

420152	TLM.SST-26/48-60+R	1500	3000	175
--------	--------------------	------	------	-----

Latches

1226

